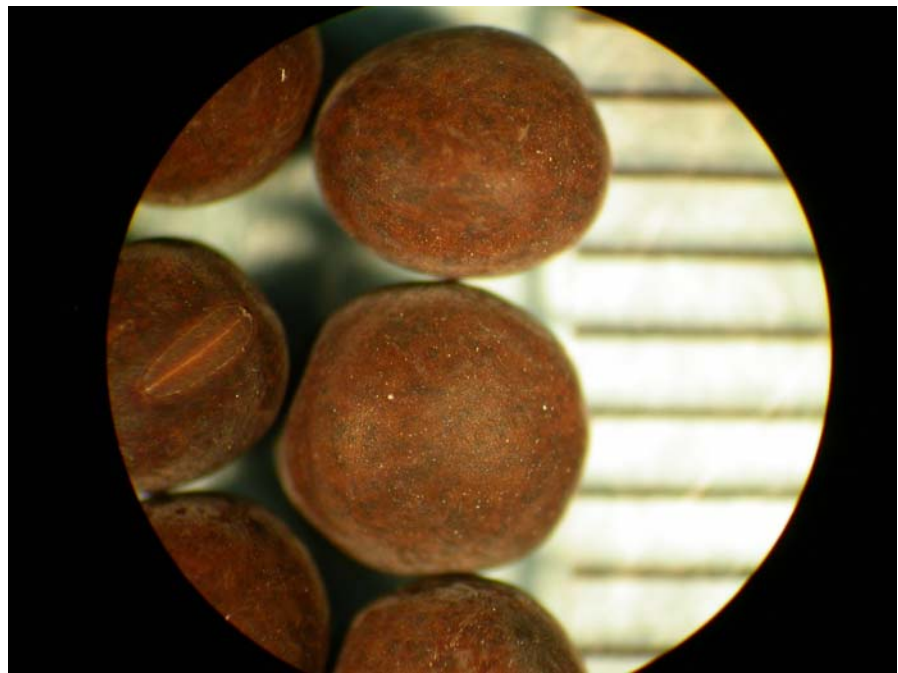


Vetch



Flowering plants. Key characteristics: leaves are compound containing small, narrow leaflets. Flowers range in color from blue to purple for most species which occur in Missouri. Presence and amounts of hair vary by species. All species in Missouri have tendrils (vining appendages) which assist them in climbing.



Seed. Seed are round with a distinct hilum and approximately 3.0 mm in diameter.

Life cycle: dependent upon species.