

Prostrate Spurge



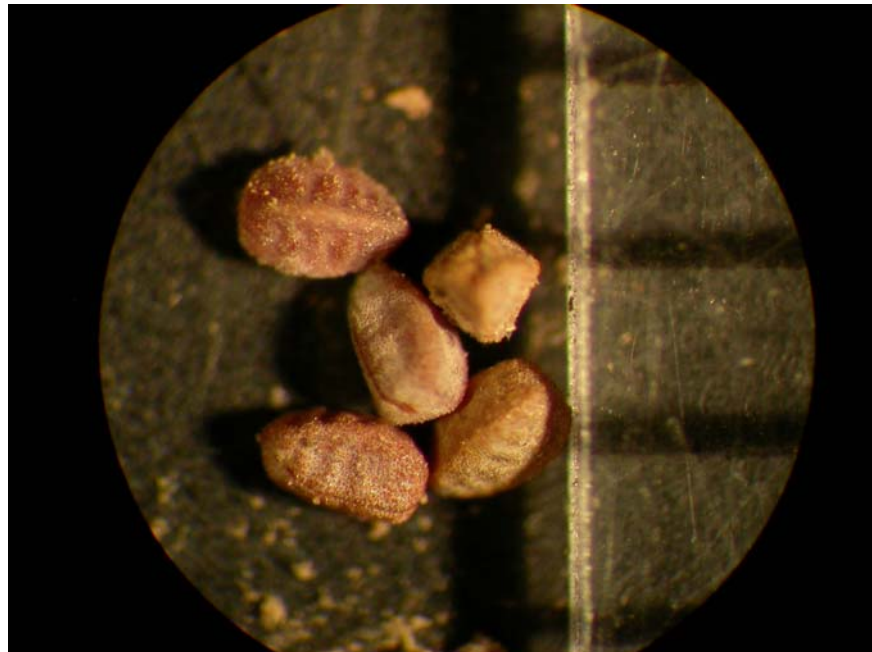
Vegetative plants. Key characteristics: often, each leaf contains a purple spot. Leaves are opposite; stems are reddish-brown in color, covered with hair and contain a milky-white sap.



Note the white, milky sap.



Prostrate spurge is a common broadleaf weed of lawns and turfgrass sites.



Seed. Seed are reddish brown with distinct ridges and approximately 1.0 mm in length.

Life cycle: summer annual.

Toxic Plant: any animal consuming spurge or coming in contact with the sap may be affected. Although spurge are not considered to be palatable, all parts of the plant are toxic. Symptoms of poisoning include irritation to the gastrointestinal tract, dermal and eye irritation, lack of performance and weakness.