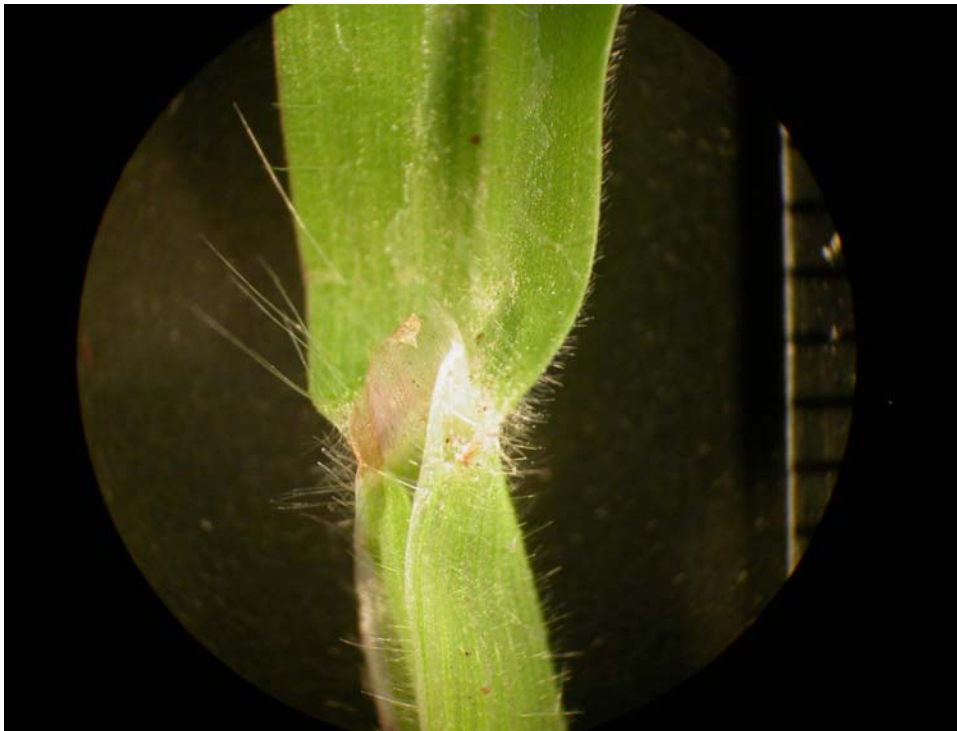


## Large Crabgrass



Collar region. Key characteristics: membranous ligule. Blades are flat and both surfaces are covered with dense hair.



Stem. Key characteristics: dense hairs which occur at a 90 degree angle to the stem.



Vegetative plant. Key characteristics: tillers which produce roots at the nodes gives the plant a prostrate growth habit.



Inflorescence.



Seed. Seed are covered with hair and are approximately 3.0 mm long.

Life cycle: summer annual.