

Giant Ragweed



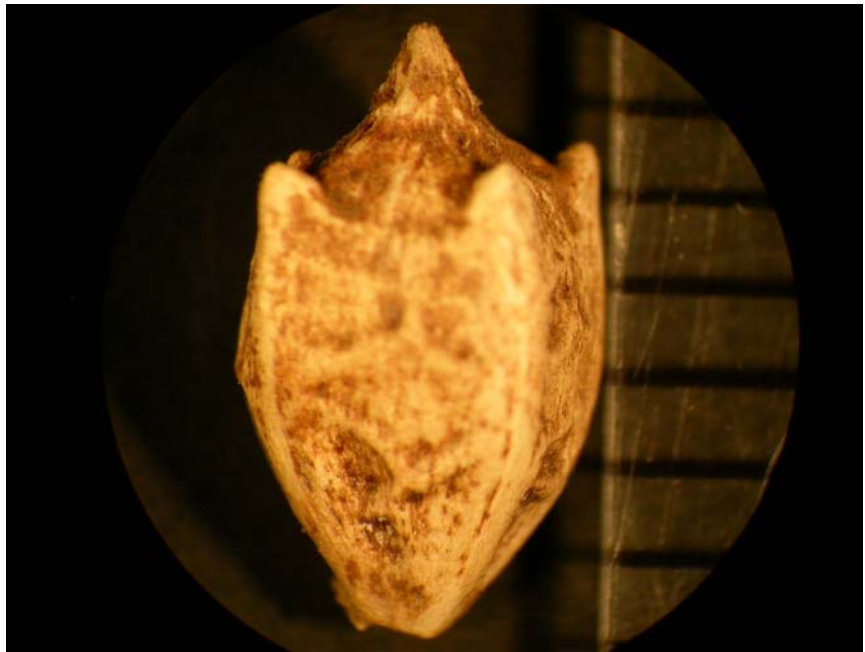
Cotyledons emerging from the soil. Key characteristics: cotyledons are large, spatula-shaped and fleshy. First true leaves appear unlobed, then develop into three major lobes.



Vegetative plants. Key characteristics: leaves develop into five major lobes and are hairy.



Flowers. Giant ragweed is a major contributor of pollen and is partly responsible for allergy problems in the late summer.



Seed. Seed are yellow-brown mottled with a large central terminal projection surrounded by several shorter projections. Length is approximately 6.0 to 10.0 mm.

Life cycle: summer annual.