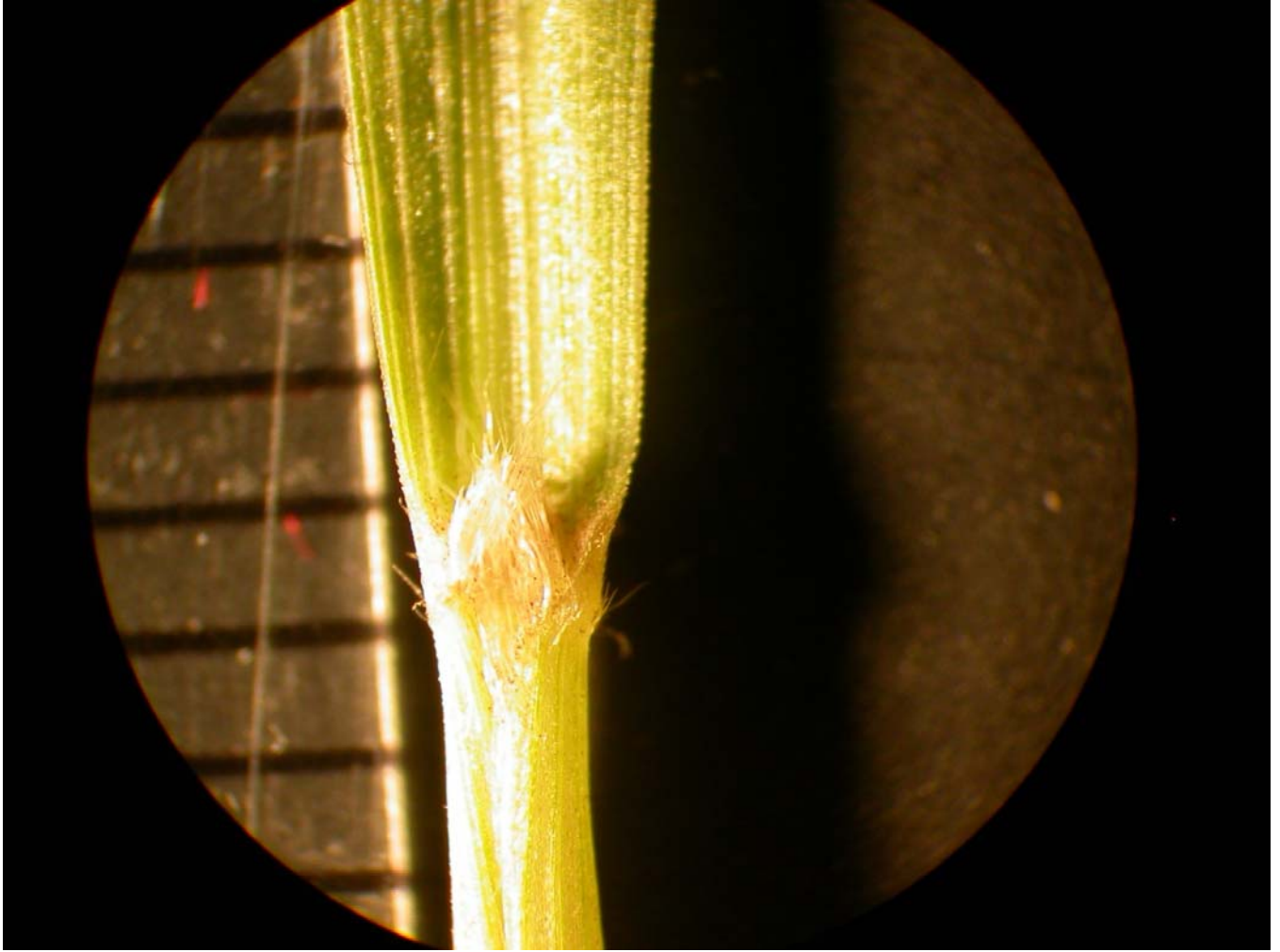
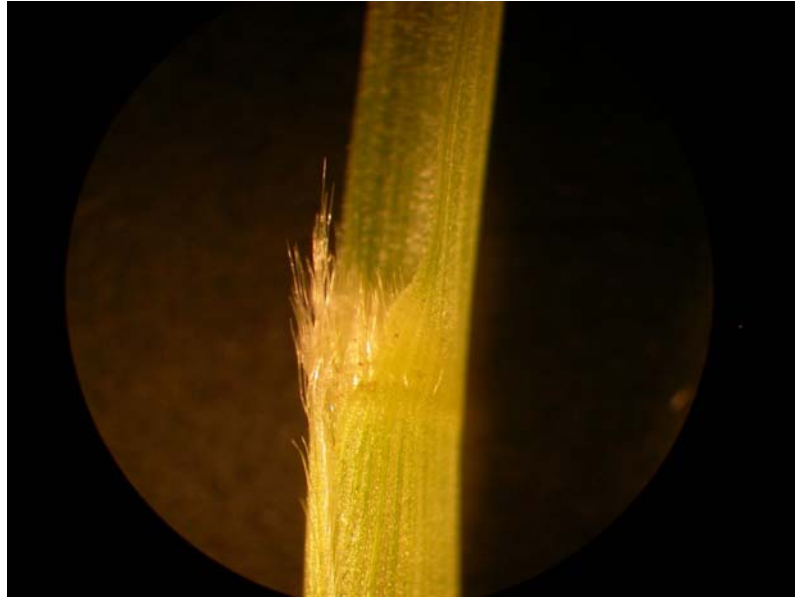
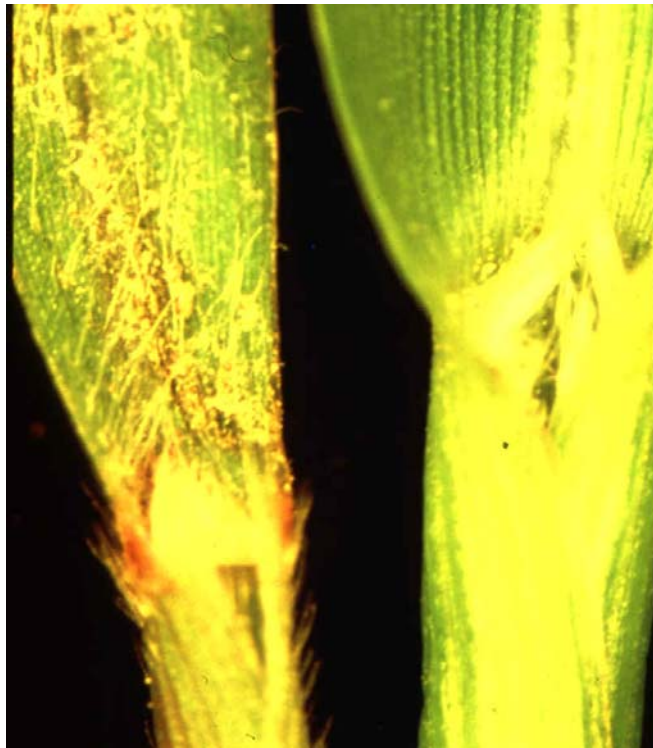


Giant Foxtail





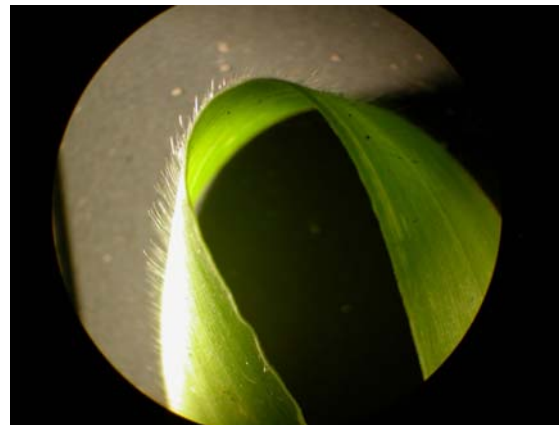
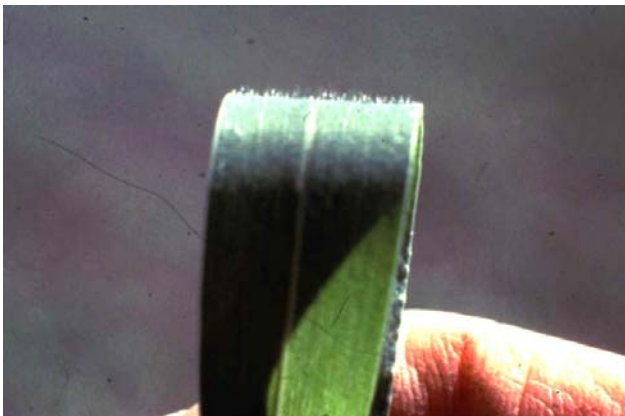
Collar region. Key characteristics: ligule is a tuft of hair.



Giant foxtail (left) compared with fall panicum (adjacent right). Note the presence of hair on the giant foxtail leaf blade and sheath while hair is absent from the fall panicum plant.



Newly emerged giant foxtail seedling.



Leaf surface. Key characteristics: long hair present on the upper leaf blade surface.



Inflorescence. Key characteristics: seedhead is a single coarse, bristly, cylindrical spike.



Seed. Seeds are ovate and approximately 2.5 mm long.

Life cycle: summer annual.