

Field Bindweed



First true leaves. Key characteristics: alternate leaves and lobed at the base.



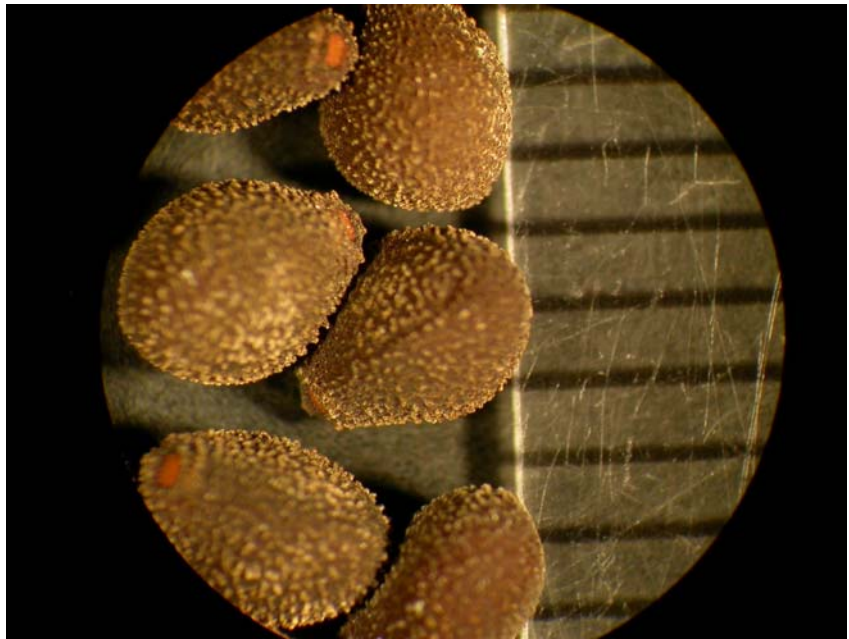
Vegetative plant.



Vining plant. Plant grows along the soil surface or will climb if objects are in its path.



Flowers. Key characteristics: petals are usually white (occasionally pink) and the flower diameter is approximately the size of a quarter.



Seed. Seed are grayish-brown, 2.5 to 3.0 mm long, obovate and have a coarse texture. The hilum is located on the small terminal.

Life cycle: perennial.