

Common Pokeweed



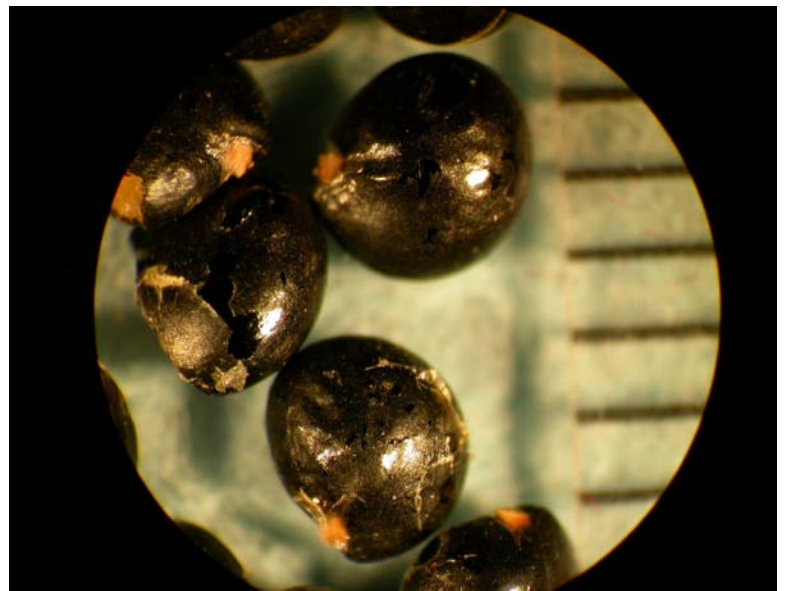
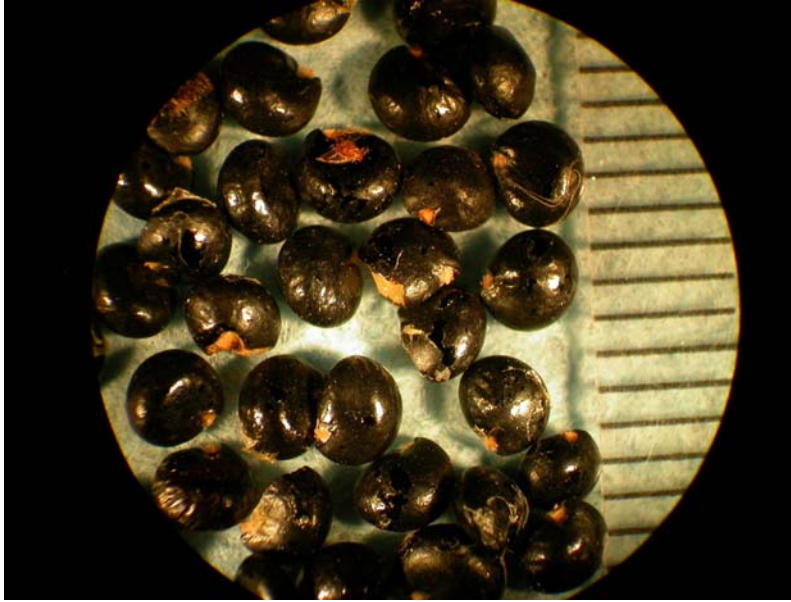
Vegetative plant. Key characteristics: petioles and stems have reddish color; leaves are alternate and smooth.



Flower.



Fruit. Key characteristics: berry-like and black when mature.



Seed. Seed are dark and glossy, nearly round and flattened with a size slightly less than 3.0 mm.

Life cycle: perennial.

Toxic Plant: All animals may potentially be affected and all parts of the plant are toxic, especially the roots and seeds. Gastrointestinal irritation (colic, diarrhea which may be bloody) are the most common symptoms. Rarely occurring, anemia and possible death have been reported. Birth defects and tumors may also be possible.