

## Common Burdock



Seedlings. Key characteristics: cotyledons are obovate and leaves are egg-shaped with wavy margins.







Basal rosettes.

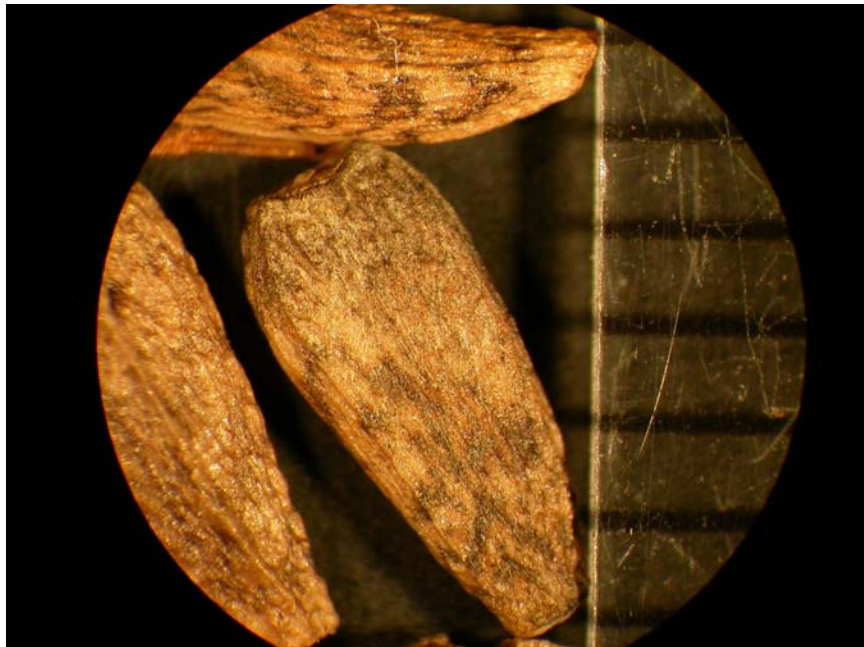


Leaves are very large with wavy margins. Photo courtesy of Wayne Shannon, University of Missouri Outreach and Extension Regional Livestock Specialist.



Flowering plant. Key characteristics: erect-growing; flowers are purple and have a "velcro-like" texture.





Seed. Seed are elongated with a dull, yellow-brown to black mottling pattern. Length is approximately 5.0 mm.

Life cycle: biennial.