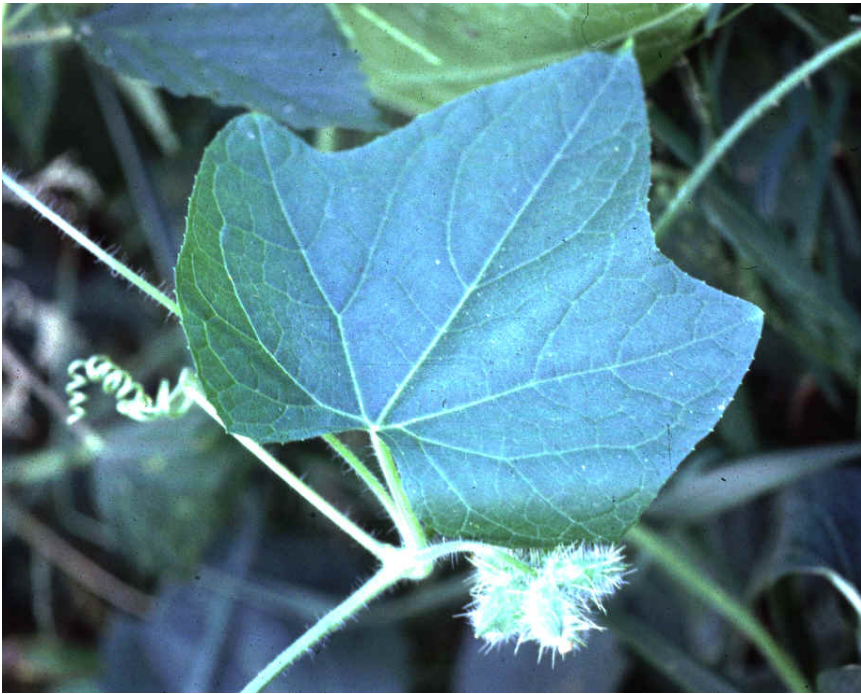


## Burcucumber



Leaves. Key characteristics: leaves are alternate with usually 3 primary lobes. Note tendrils below giving the plant a vining growth habit.

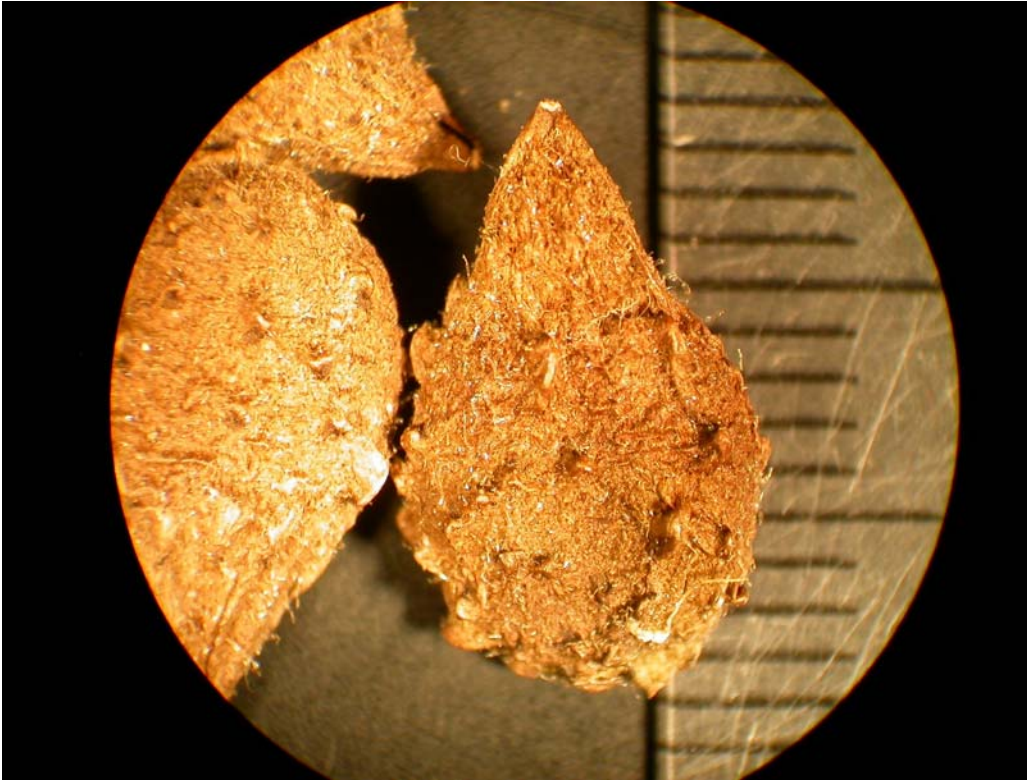




Photo courtesy of Brent Carpenter, University Outreach and Extension Regional Farm Management Specialist.



Fruit. Key characteristics: occur in clusters, are pointed and covered with hairs.



Seed. Seed have a rough texture and covered with hair. Length is 12.0 to 15.0 mm.

Life cycle: summer annual.